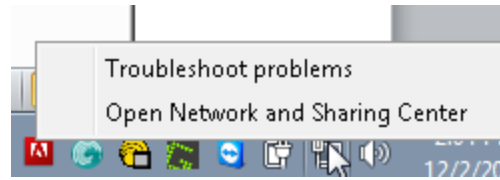


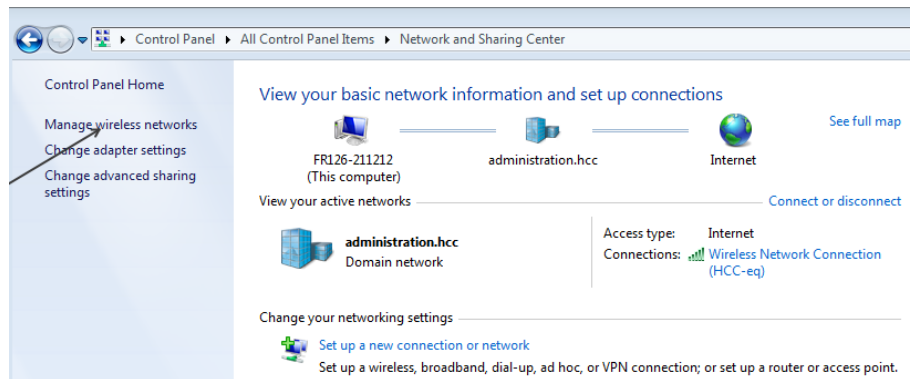
Connecting to HCC Wireless – Staff, Faculty and Students using a Personal Laptop

If you have trouble connecting to the **HCC-User** wireless with a personal laptop, follow the directions below.

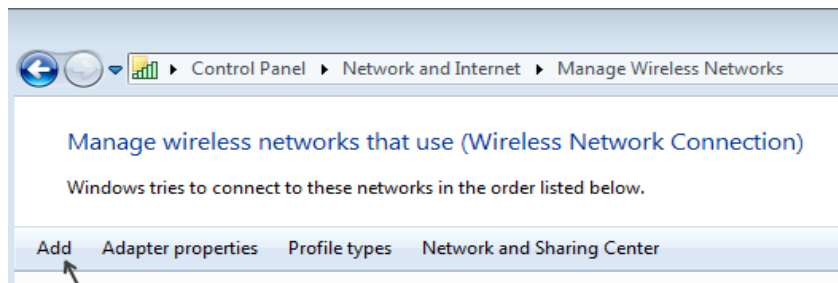
Right-click the wireless icon near the clock and choose **Open Network and Sharing Center**



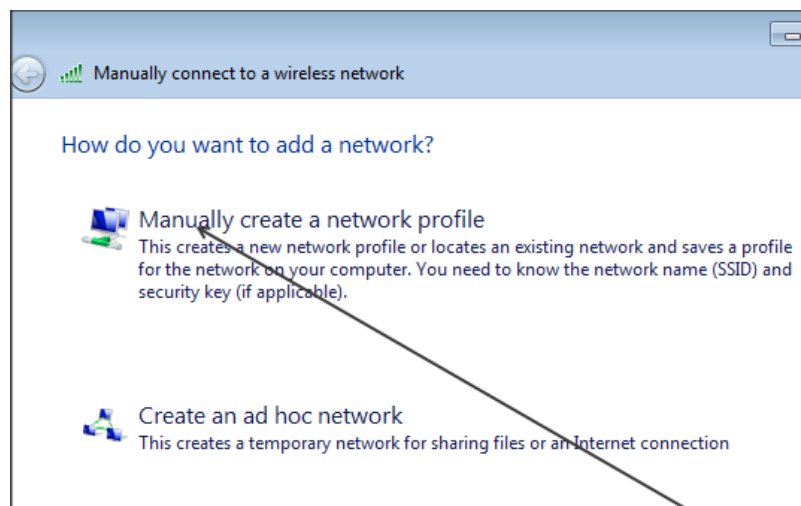
Click **Manage wireless networks**



Click **Add**



Click **Manually create a network profile**



Enter the following information and click **Next**:

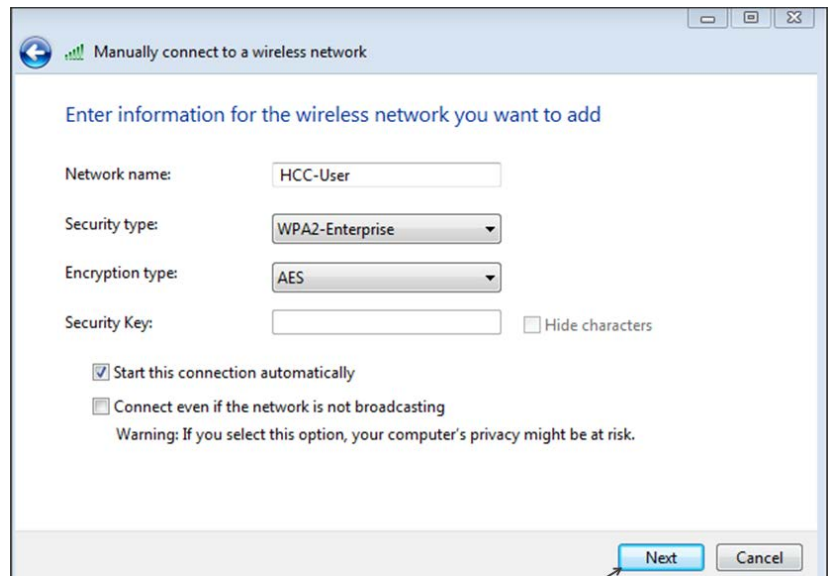
Network name: HCC-User

Security type: WPA2-Enterprise

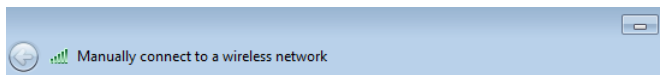
Encryption type: AES

Security Key: leave blank

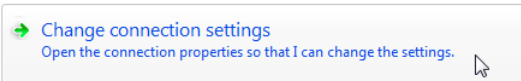
Start this connection automatically: **checked**



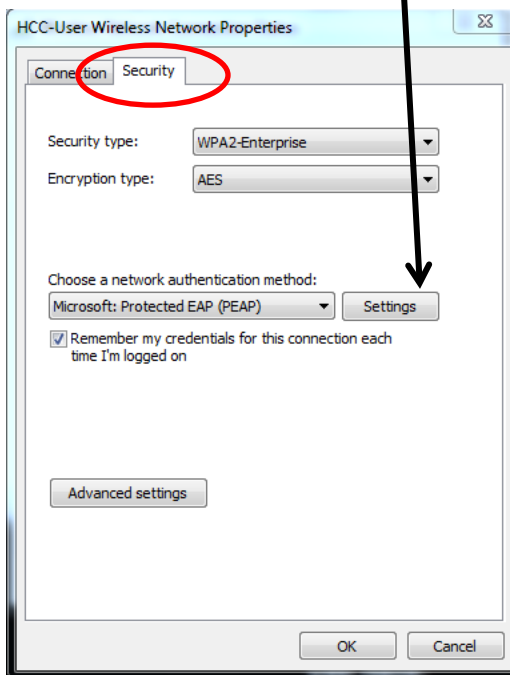
You will receive the following screen, click **Change connection settings**.

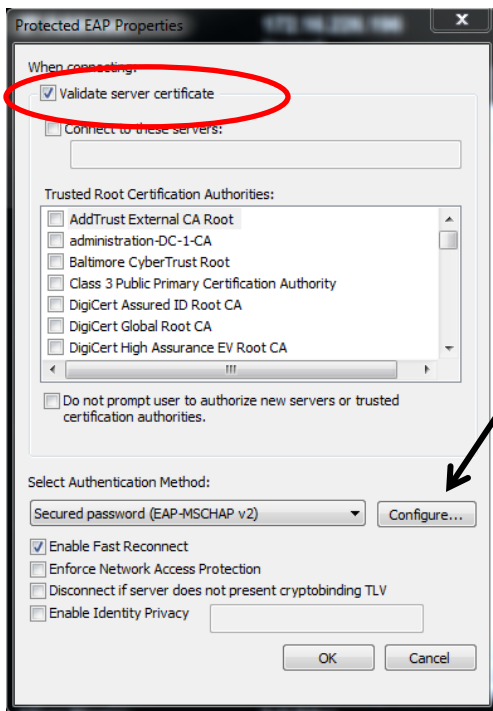


Successfully added HCC-User



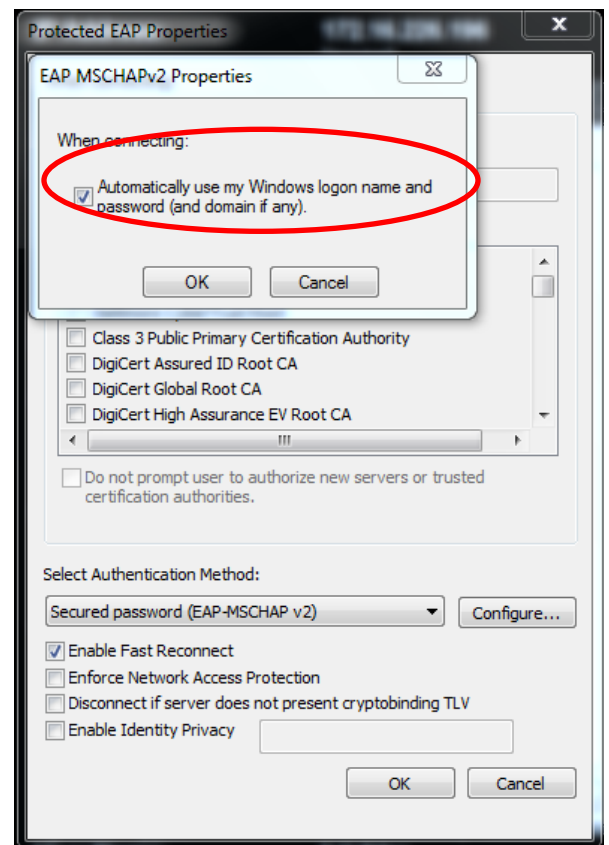
Select the **Security** tab and click **Settings**





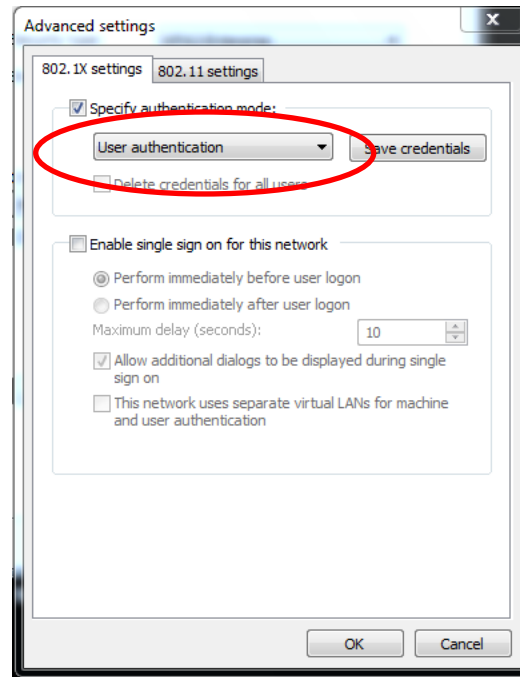
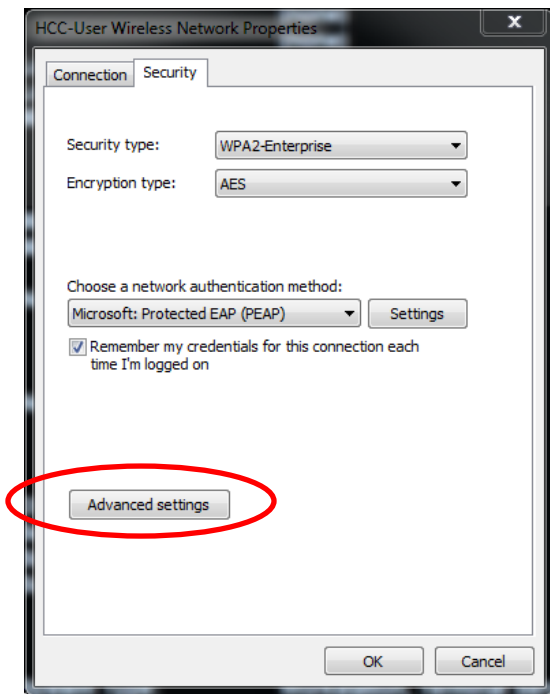
Uncheck: **Validate Server Certificate**. In the same box select the **Configure** button.

Then uncheck the box: **Automatically use my Windows Logon Name and password (and Domain if Any)**. Select **OK**.

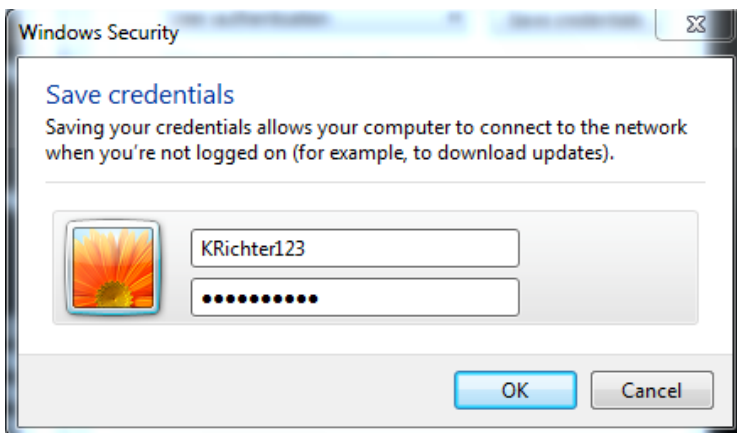


Select the **Advanced settings** button.

In the drop down menu, change the option to: **User authentication** and click the **Save credentials** button.



Enter your HCC account Username and Password and click OK.



HCC Helpdesk - Frost 109

helpdesk@hcc.edu

413.552.2075